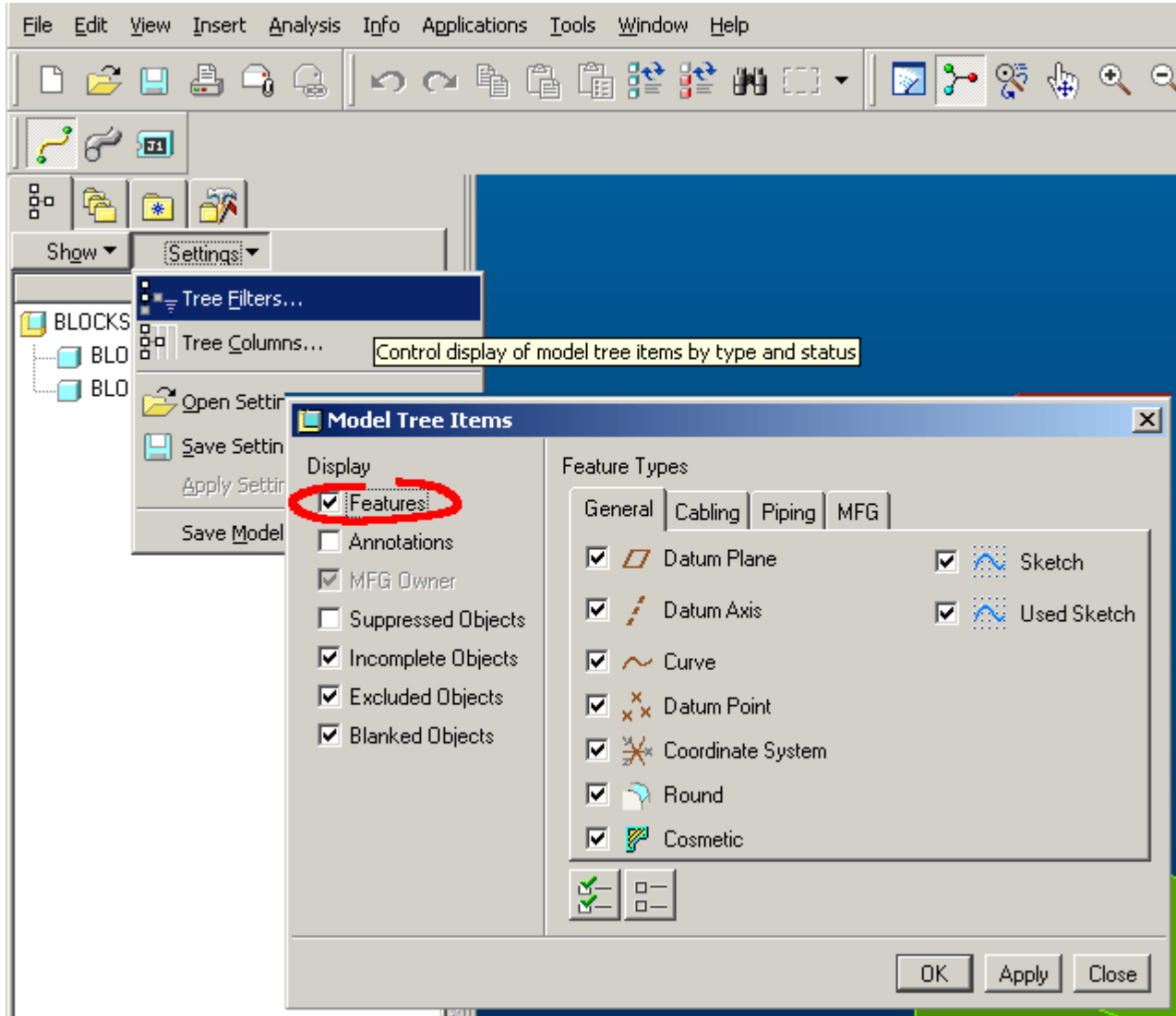
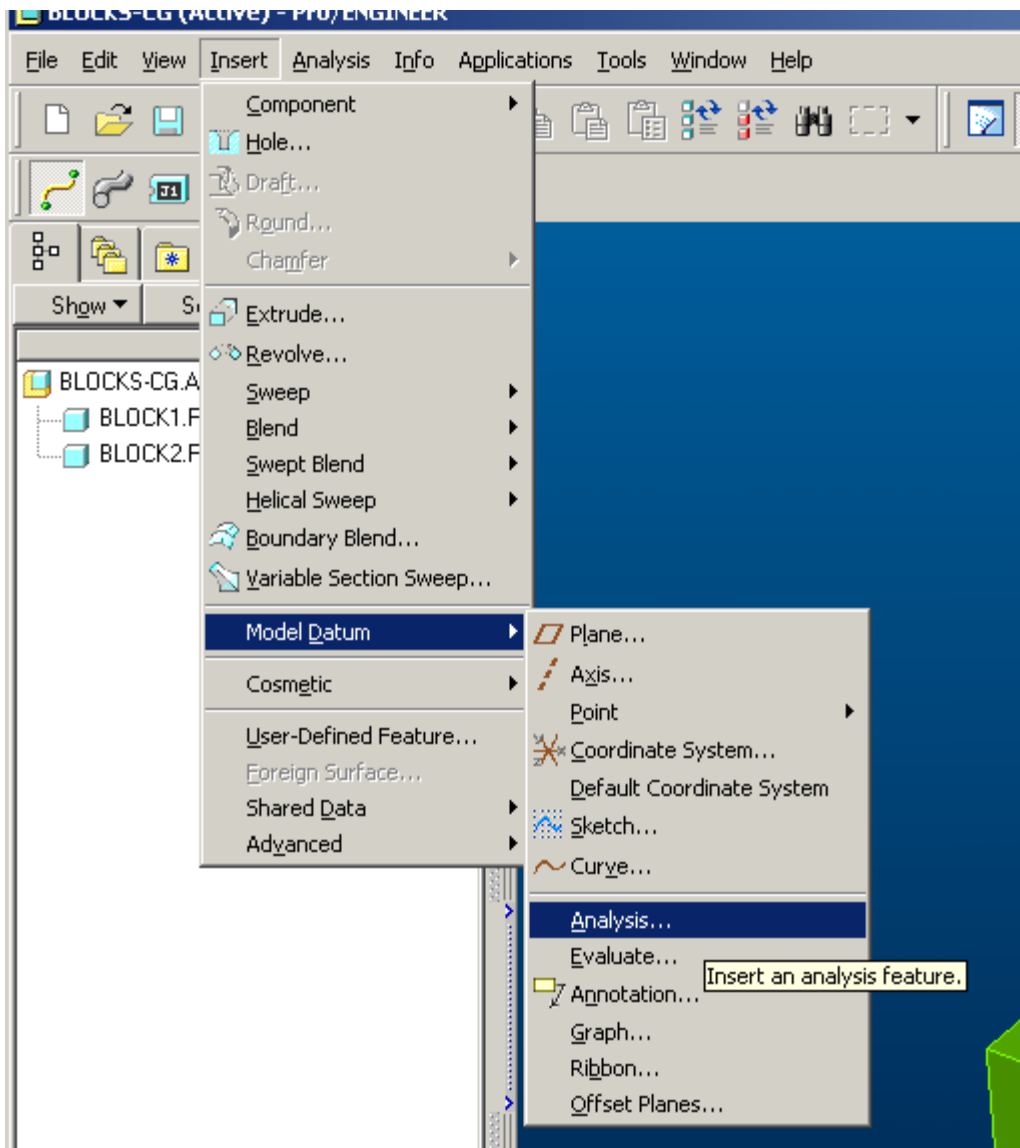


Adding a Center of Gravity Feature

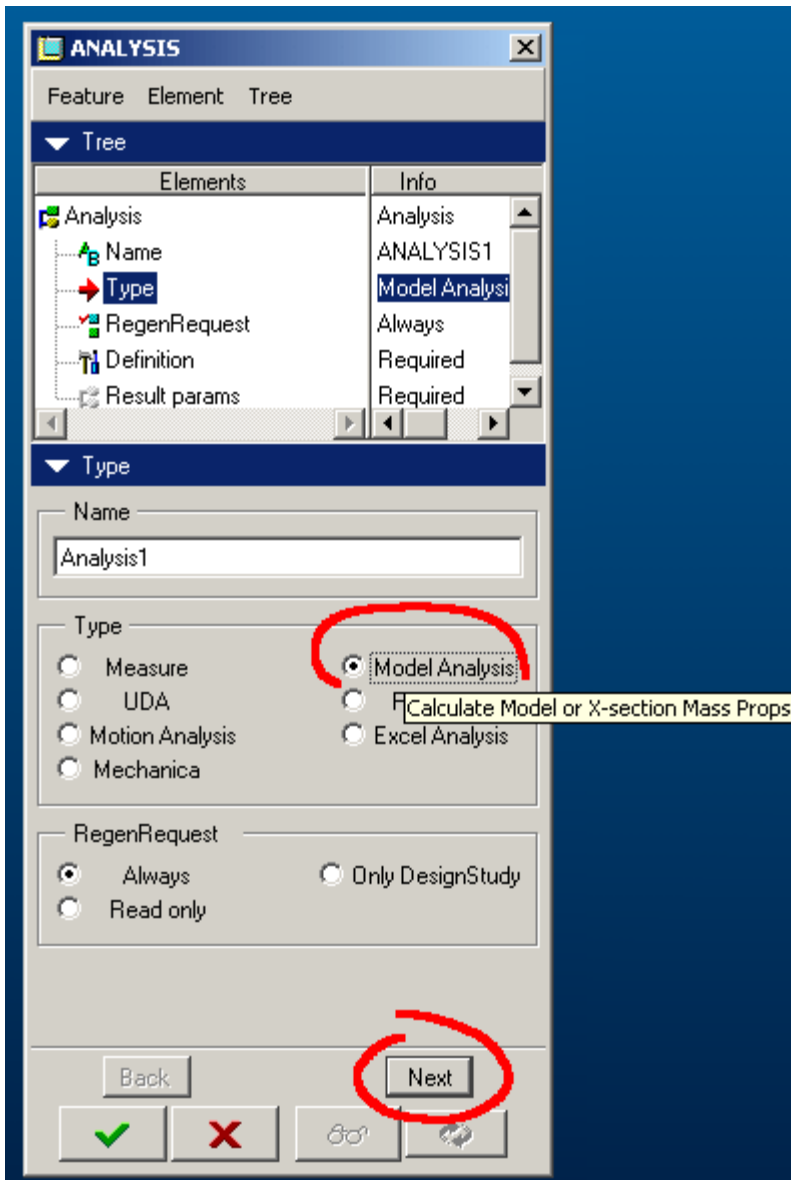
Adding a CG datum feature allows measurement to surfaces in the part or assembly. This example will show its use in an assembly.



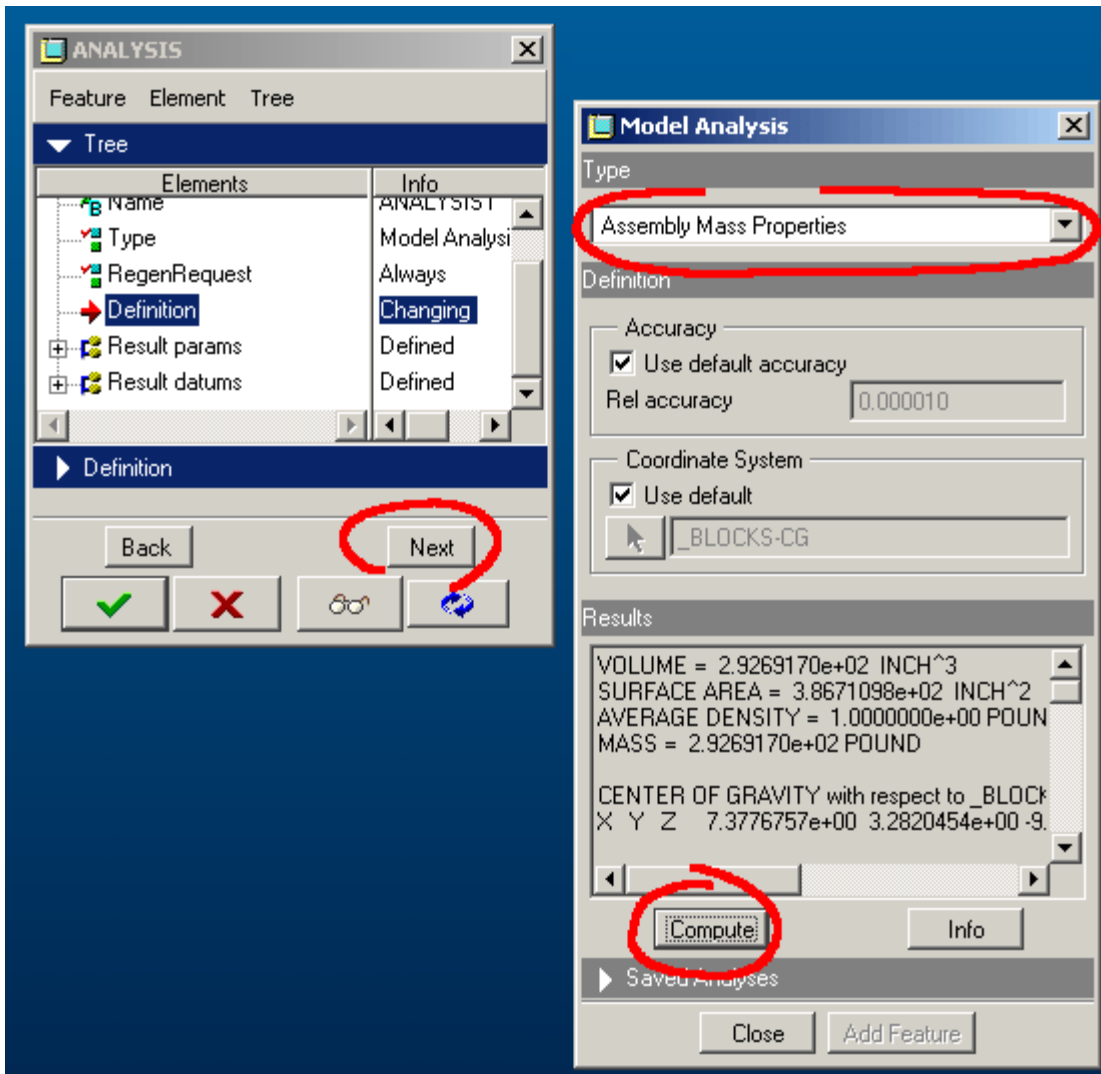
Begin by turning on the display of features in the tree:
 Settings --> Tree Filters --> Features - check box on



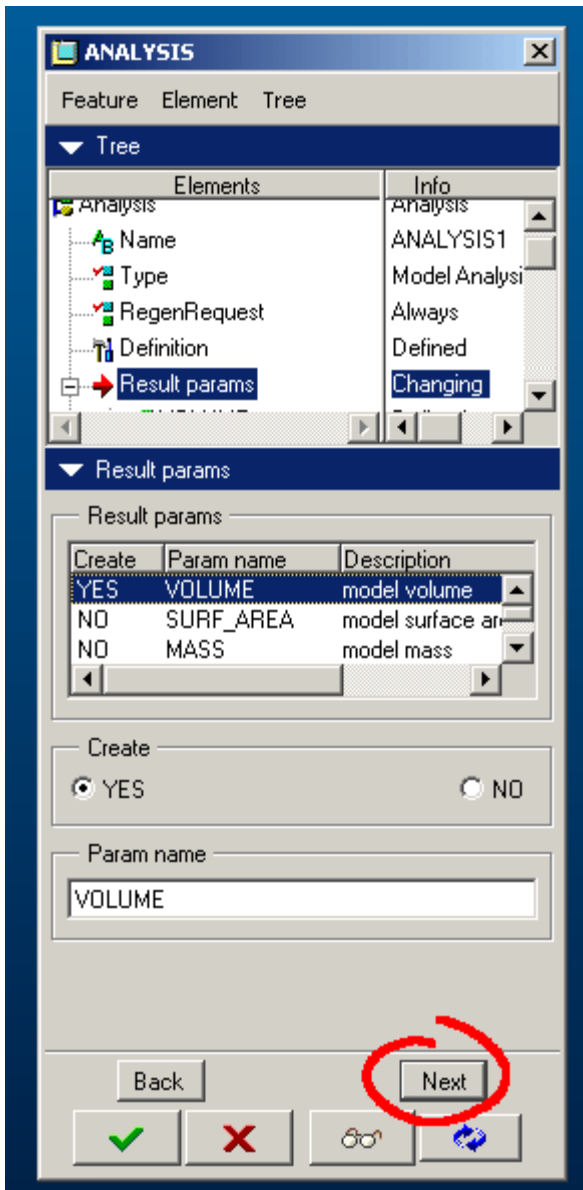
1) Insert->Model Datum->Analysis



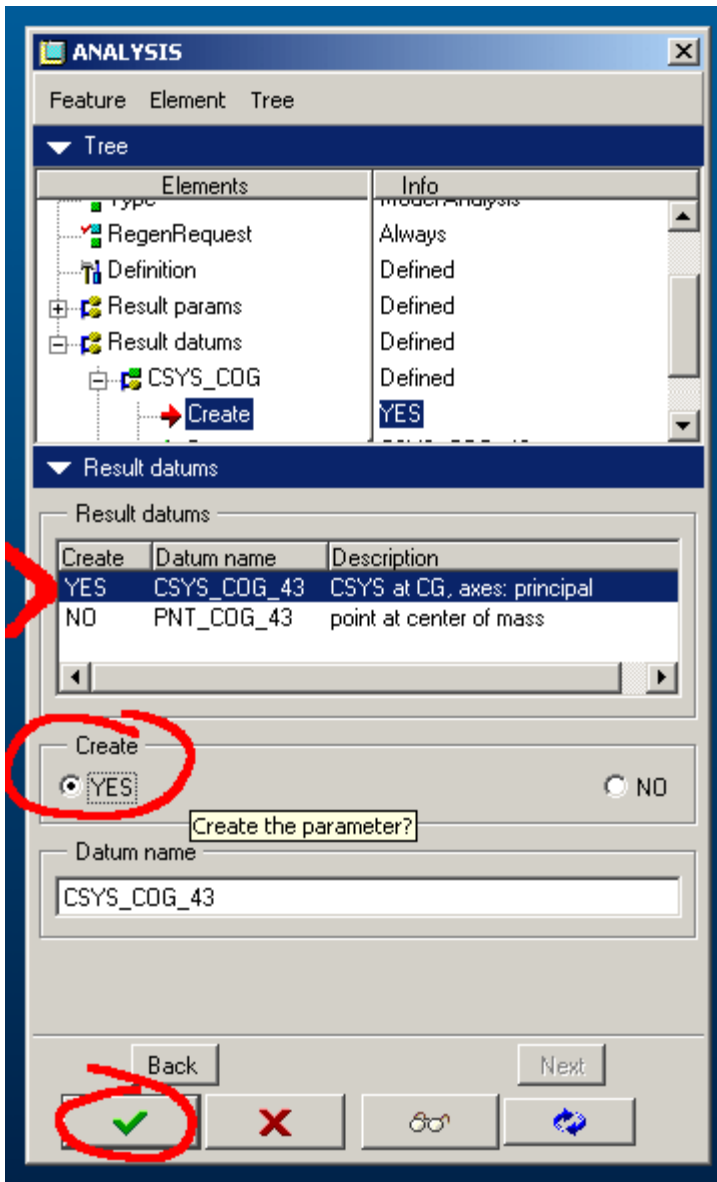
- 2) Check Model Analysis
- 3) Give it a name in a specified field (press ENTER after) and click Next



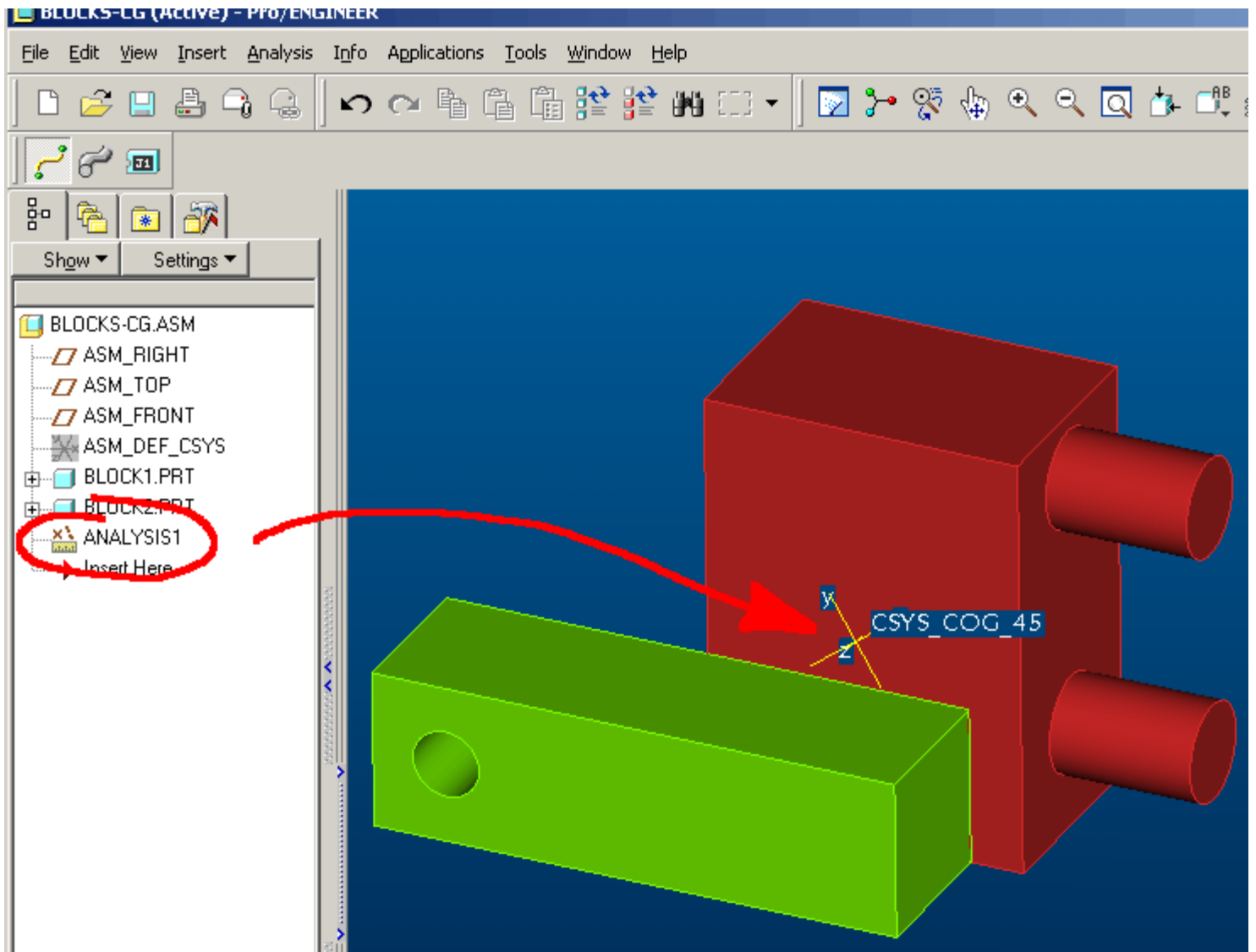
4) Select Model Mass Properties, click Compute and afterwards, Close



5) In a Result params window, click Next



6) In a Result datums window, select the datum desired (CSYS or point) and check Yes for each one.



7) Confirm and the datum is done.
