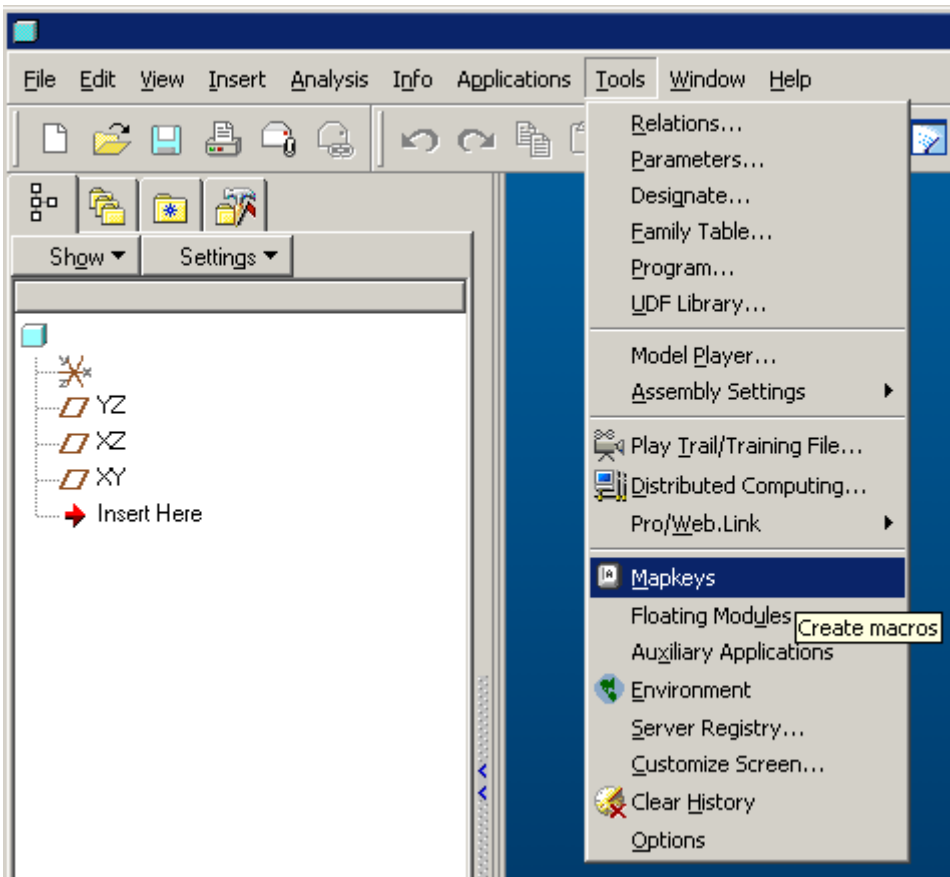


MAP KEYS

Map Keys are short macro sequences of commands that can be assigned to keyboard key strokes. It is recommended that they be 2 or 3 key stroke characters. Single key stroke should not be used since this could limit the number of macros you could create. Ideally, they should have a sequence that relates to the function you wish to record, like "vf" for view front.

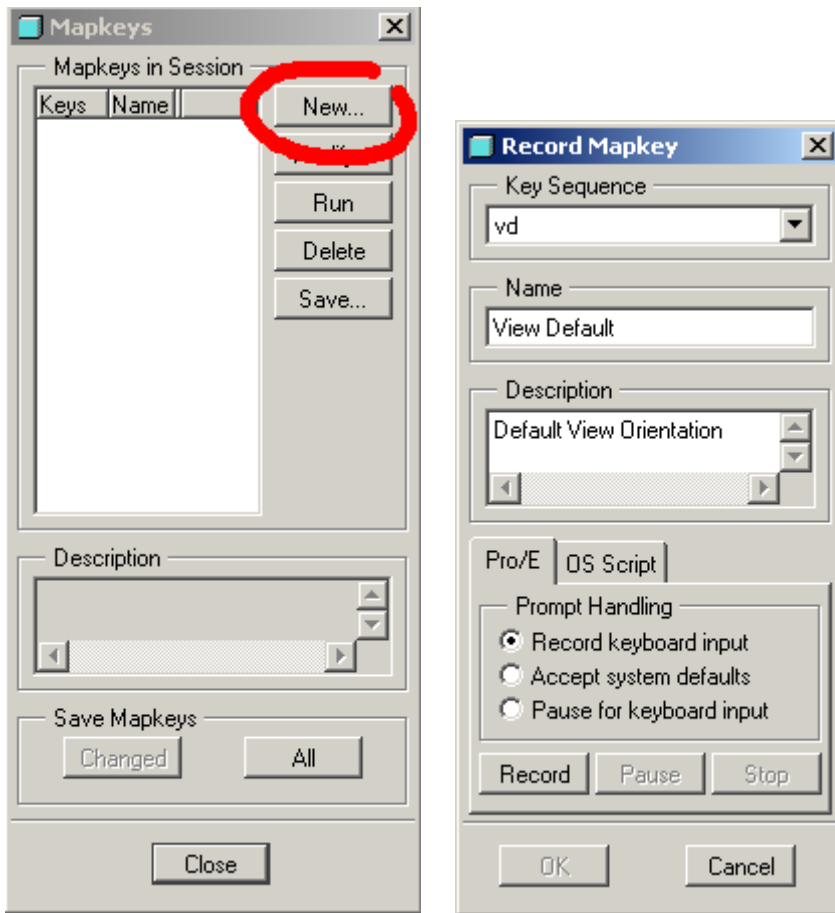
To open the Mapkey control panel, select **Tools > Mapkeys** from the top menu bar.



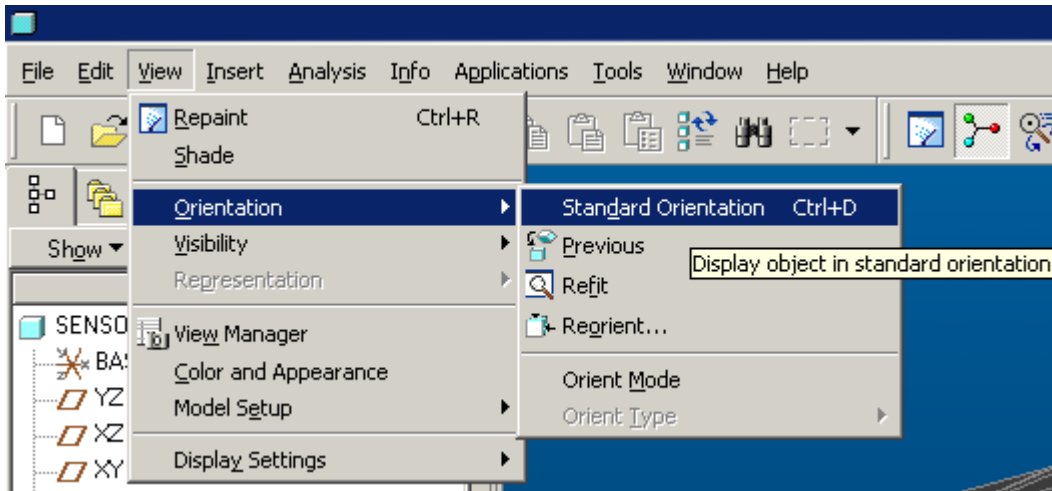
The Mapkey control panel will allow you to record, modify and delete your mapkey macros. Mapkeys that begin with \$ are Function keys. Mapkeys may not be compatible with other releases of the WildFire software since command sequences may change from one release to another.

Creating Mapkeys:

Select the [New] button in the Mapkey menu. The Record Mapkey dialog box will open. Enter the Key Sequence, Name, and Description as shown. Record the following command sequence:



Record
 View > Orientation > Standard Orientation
 Stop > OK



Mapkey definitions are saved in the configuration file config.pro. New Mapkeys are added to the end of the file so if there are multiple definitions using the same keystrokes, only the last one will be used.

There are three options for saving the mapkeys.

Save - saves only the highlighted mapkey

Changed - saves any mapkeys created or modified in this session

All - saves all mapkeys

Mapkeys can be saved to the config.pro file, the current_session.pro or any filename you create. Only the config.pro will be loaded automatically on startup of WildFire. You may also want to edit your config.pro file using a text editor from time to time to remove any duplicate entries.

Commonly used Mapkeys

vd	View Default
vr	View Right
vf	View Front
vb	View Back
vt	View Top
vl	View Left
cd	Create Datum Plane
cp	Create Protrusion
ch	Create Hole
cr	Create Round