

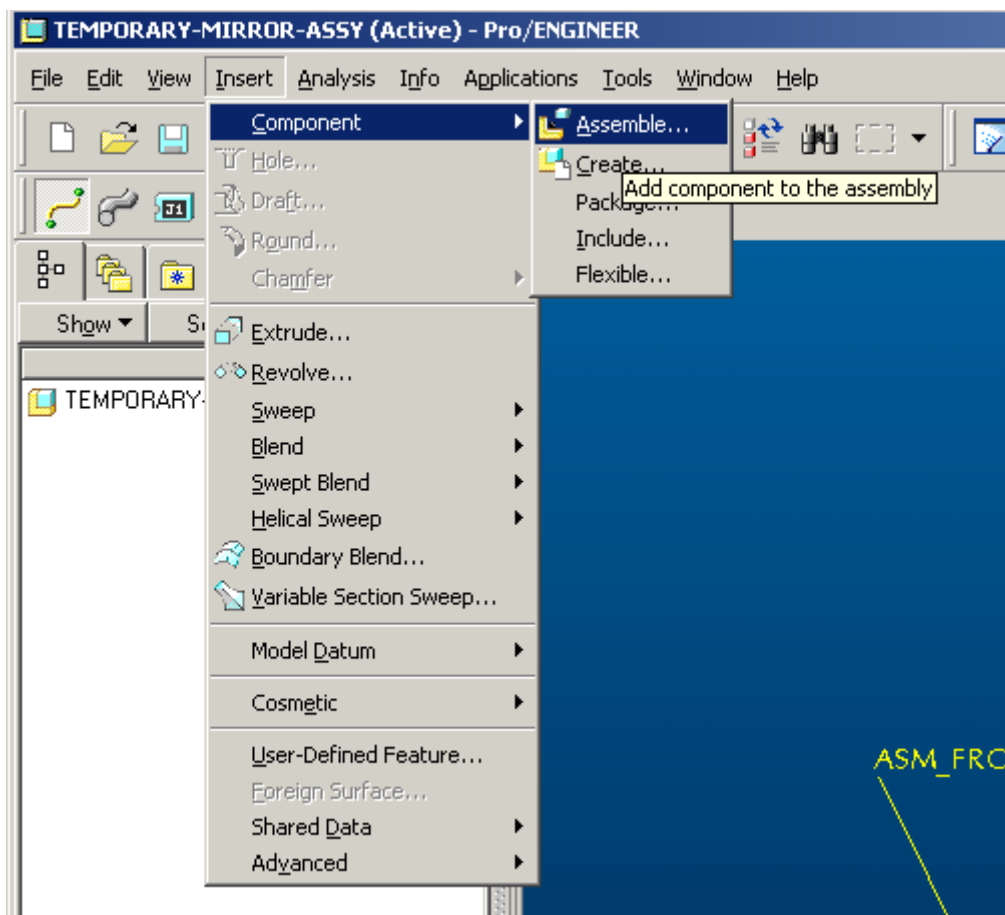
### Mirror Part

Creating a new part which is a mirror of an existing part, can be done using a temporary assembly that will not be saved.

1. - Create an Assembly
2. - Insert the part to be Mirrored
3. - Mirror about the Assembly plane
4. - Save the new part

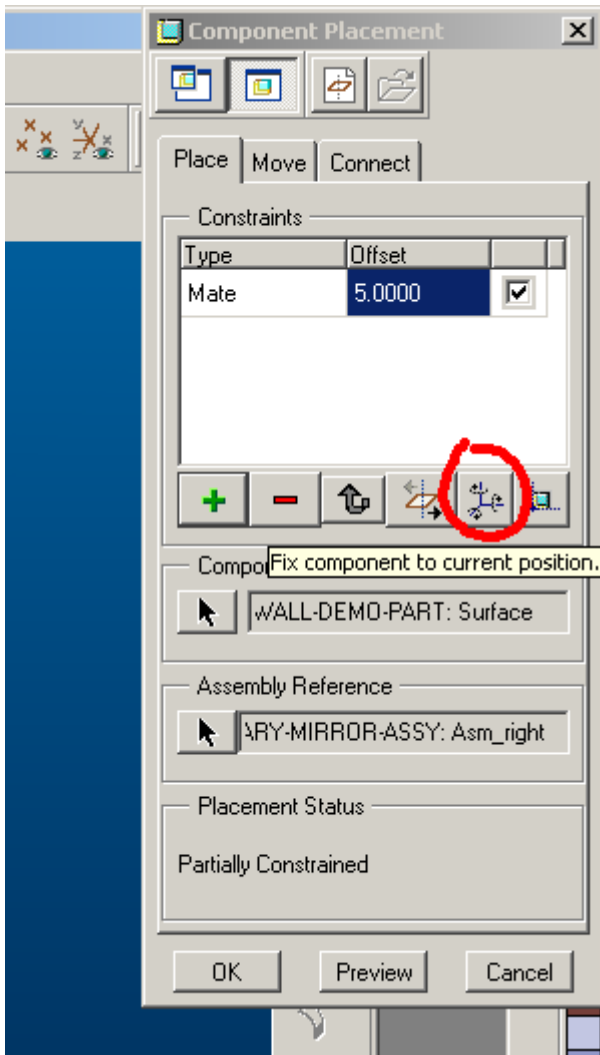
=====

Create a New Assembly - (this example - name: TEMPORARY-MIRROR-ASSY.asm)



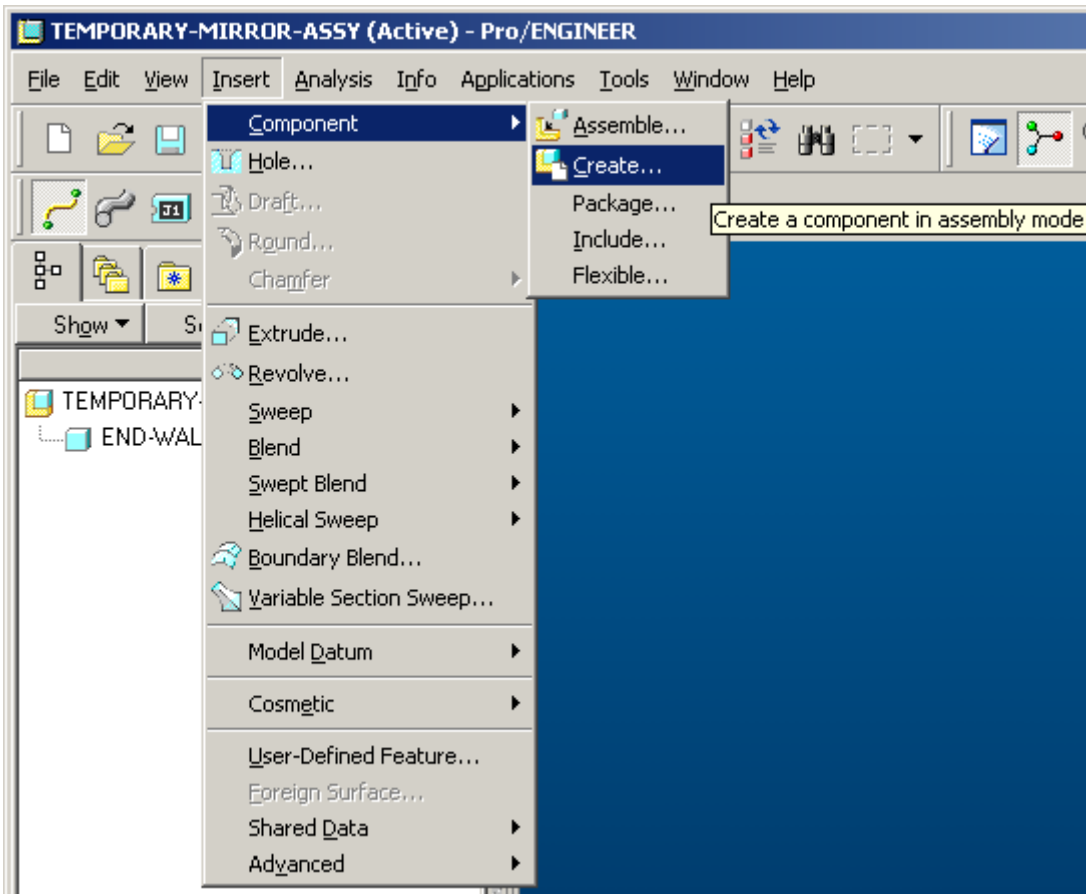
Insert the part to be mirrored

----



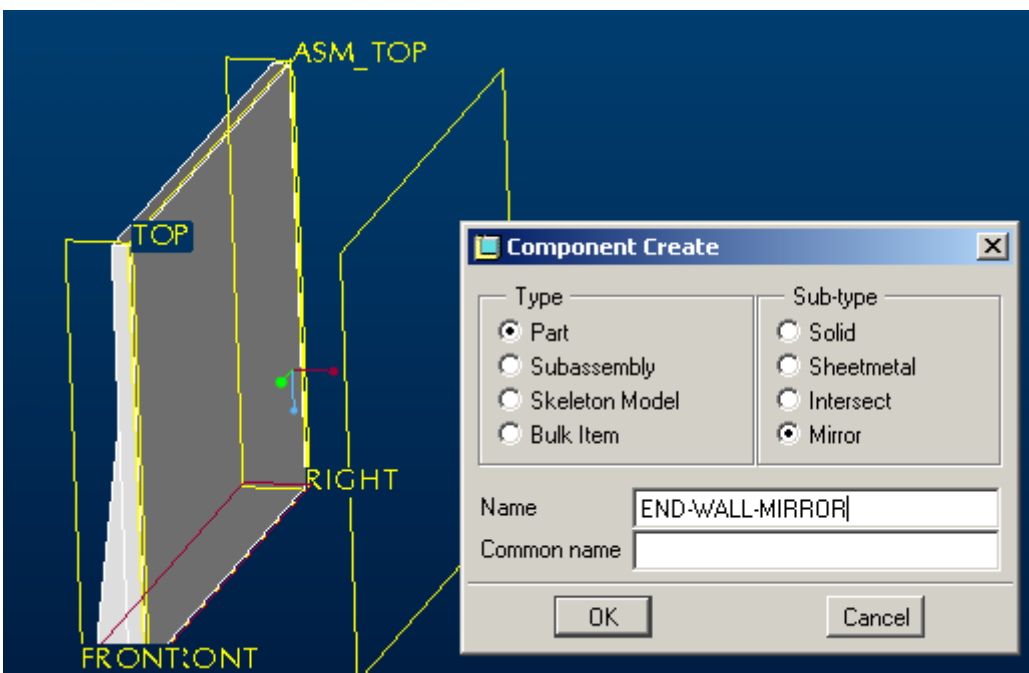
Place the component with an offset to the assembly plane to make it easier to select the plane for mirroring.

----



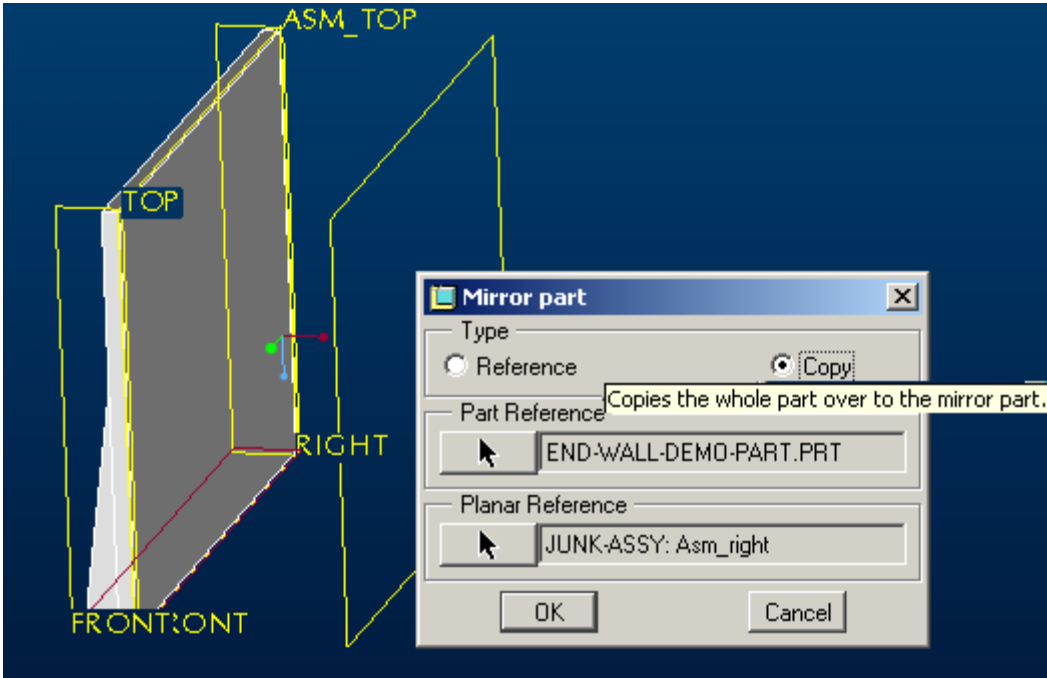
Select **Insert > Component > Create** to build the new mirror part in the assembly.

----



Select the **Mirror** Sub-Type radio button and name the new part. **OK**

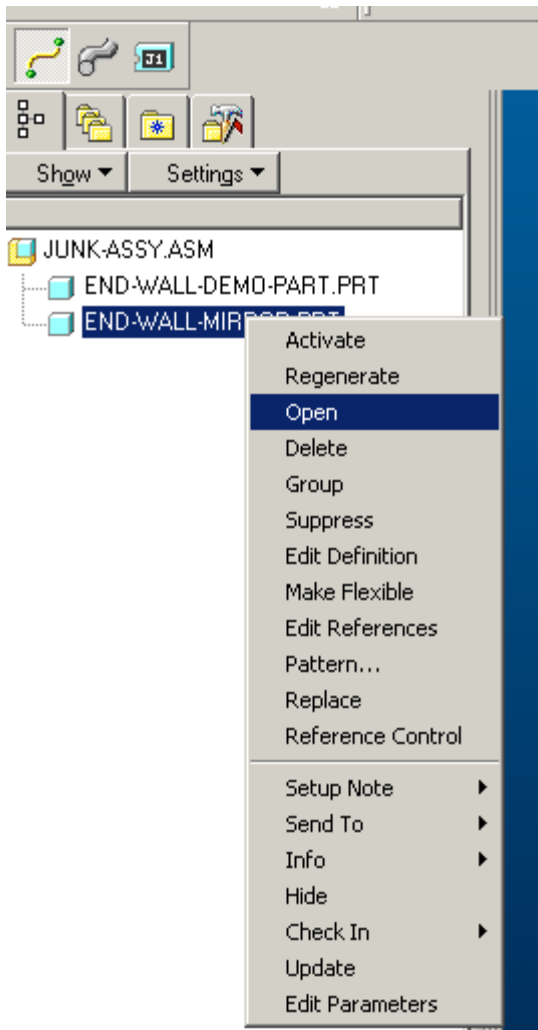
----



- Select the **Copy** radio button
- select the part to mirror
- select the Assembly reference plane to mirror on

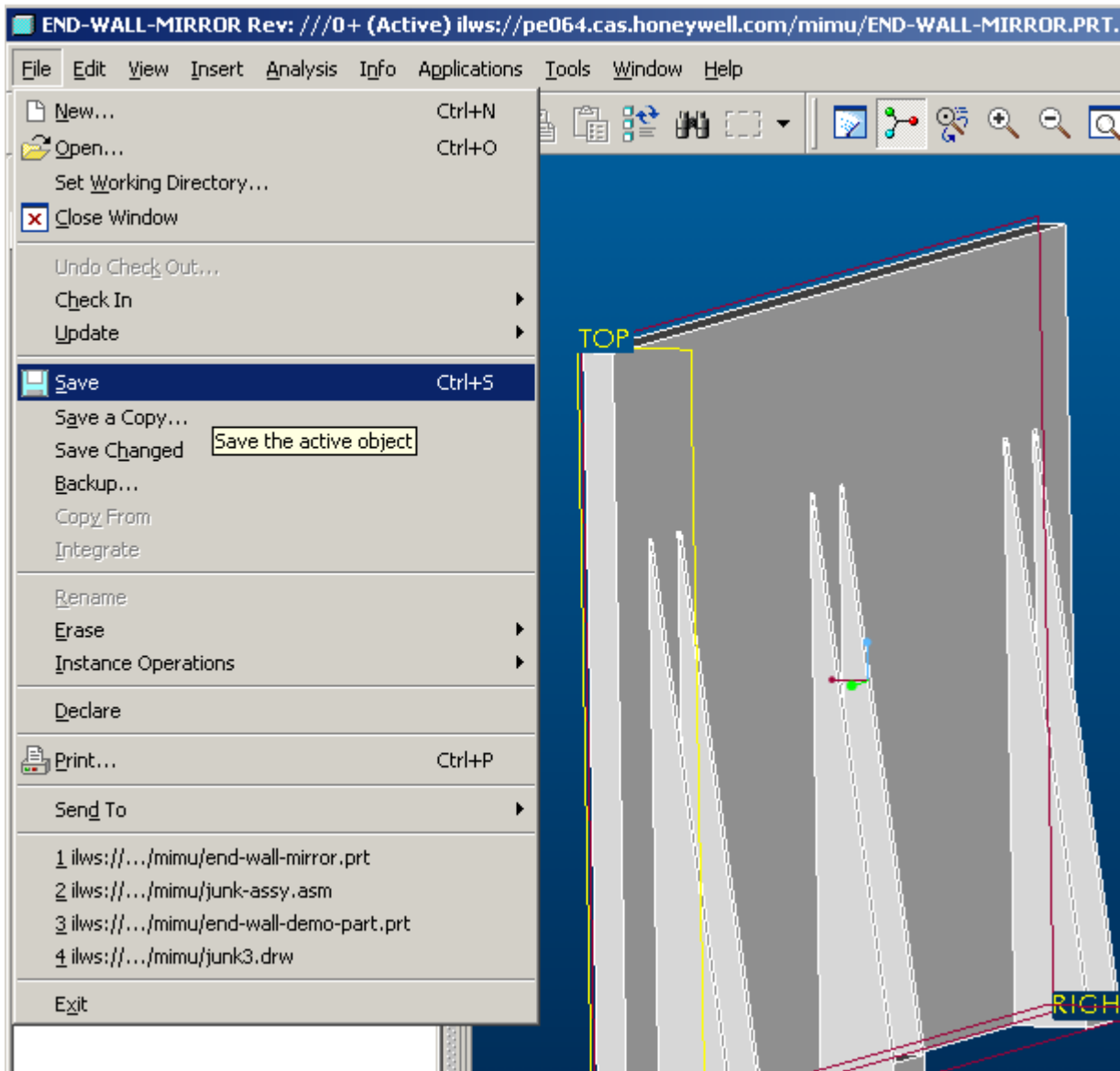
(Note: - Do not select a reference plane of the part or it will create a dependency to the original part.)

----



Once the new part has been created, select it in the assembly tree and open the part.  
(Tip: - Highlight the part in the assembly tree and right mouse button > Open)

----



Save the new part

Done